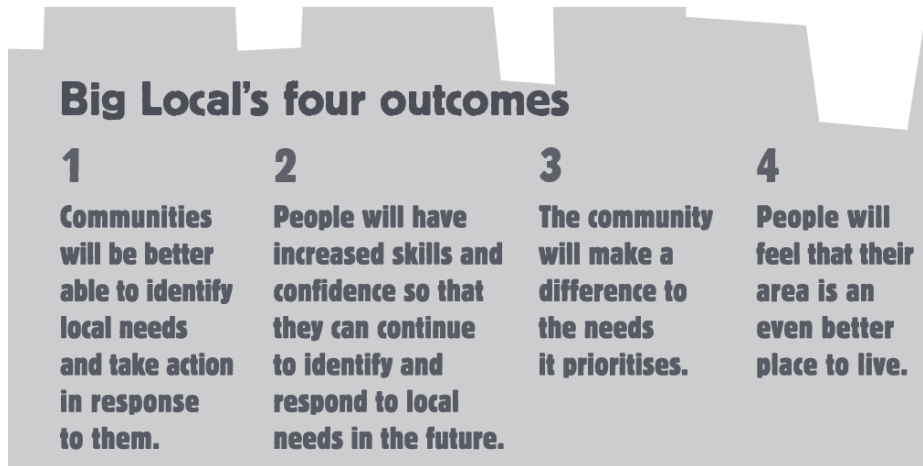
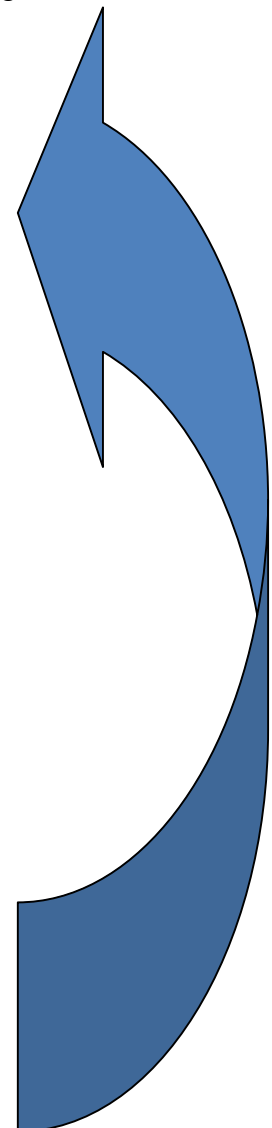




Appendix 1 – The Big Local ‘Pathway’



To achieve the four outcomes above, Big Local will support the communities of Fratton to run the programme themselves so that it is community-driven, responds to local needs and builds on local strengths. The programme follows a pathway with a number of stages to do this:





Getting People Involved:

The first stage is to spread the word about Big Local and make sure local residents know how they can get involved. This might include creating publicity material about Big Local, using networks of community members to spread the word, using existing local newsletters or events, and finding individuals and people working in local organisations who might be interested in playing a role. This is a crucial step in the pathway and one you need to spend some time on to get right. Getting people involved is an ongoing activity throughout Big Local so don't worry about speaking to absolutely everyone immediately; but do make sure you know who's in your area and how you can reach them.

Exploring your Big Local vision:

This is about thinking through how your area might change for the better. What do people like now? What should change? What would people like to build on? What can you do to build on what is already good about your area and the existing talents, skills and abilities of people locally?

At this stage, not everyone's vision will be the same and the idea is not to arrive at a shared vision yet but simply to create a profile of your area (what your area is like now) and, importantly, to engage a wide range of people and groups about their hopes and visions for the future.

Forming your Big Local partnership:

Once visions have been collected, the next stage is to create a Big Local partnership to guide the overall direction of Big Local in your area and make sure a diverse range of residents and local organisations continue to be actively involved. All the work in steps one and two will have contributed to the development of this partnership.

The majority of members will be residents, but the partnership will probably include people from local organisations that are involved with your area as well. Membership of the partnership will change over time in response to your Big Local activities and it will be reviewed at least annually.

Creating a Big Local plan:

The next thing to do is to move from a range of visions to a shared long-term vision and plan. Your plan needs to build on what is already



good about your area, provide community-wide benefit, respond to local needs, and explain how you will meet Big Local's four outcomes (see below). You have at least £1m funding and your plan will propose how best to use it over the 10 years and more.

Delivering your Big Local plan:

Delivering your agreed plan will involve a range of activities, such as creating a small grants programme for your area, using 'social investment' loans, and paying for specialist services. If you don't understand what some of these things are then don't worry – your rep can help you, and there are explanations and guides on the Local Trust website.

Big Local partnerships will also decide whether there are suitable local trusted organisations who can administer the different types of funding, or whether they wish Local Trust to help.

Collecting the evidence:

Local Trust wants to ensure that the Big Local areas are able to learn from and adapt their activities as they go along. Assessing the impact of your activities involves looking at how your Big Local activities have changed things in your area, and reporting progress.

Local Trust will need to receive reports showing key activities, achievements and funding distributed. This will help you reflect upon how things are going and ensure that you make progress towards the outcomes in your 10-year plan. This will help Local Trust to share progress with the Big Lottery Fund.

Reviewing your Big Local plan and partnership:

The Big Local partnership and Big Local plan will be reviewed annually. This will ensure open, critical reflection on how your partnership is working to achieve the outcomes set out in your plan. The review will check whether your plan remains relevant and continues to address your area's priorities and is meeting the Big Local outcomes.



Appendix 2

The range of responses, separated into categories, can be found below:

Consultation results

AMENITIES

Retail

Better range of shops, more shops, improve shops, rejuvenate shops(14)

Too many empty shops (7)

Do something with empty shops (6)

Council to do more in up keep of shopping area drop rents to attract people (5)

Improve Bridge Centre (3)

Encourage people back to local shops (3)

Café (2)

Less Charity Shops (2)

No longevity of retail

More Local Traders

The small shops are all closing WHY

More small shops opening up

Investment in local businesses

More clothing shops

McDonalds

Less takeaways and kebab shops

Bank

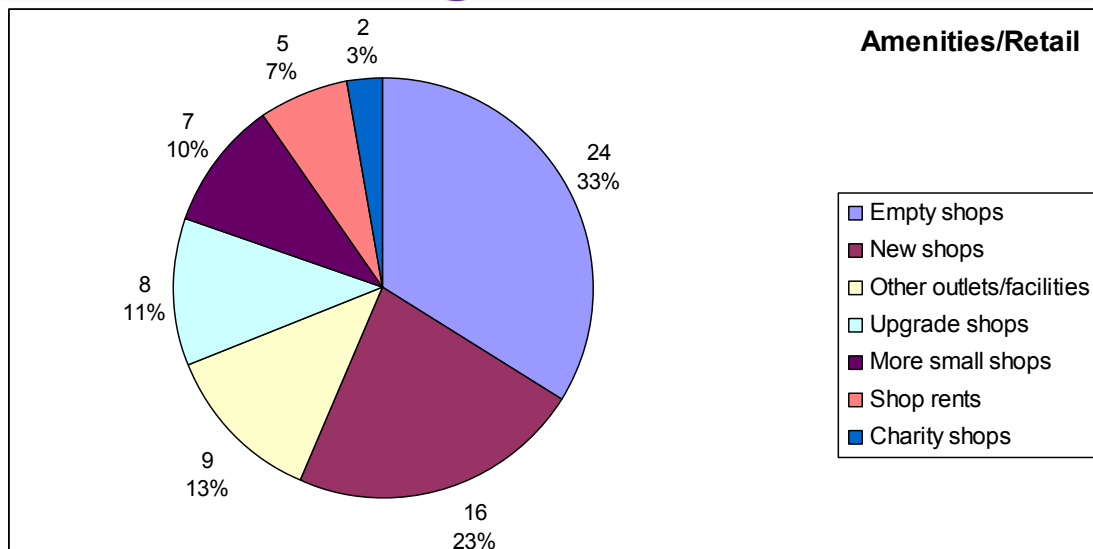
More corner shops

New businesses

New shops meaning more jobs

Generate more varied employment opportunities'

By encouraging local businesses to support new start up????



Recreation

Refurbish community centre and more activities (7)

A community area where the people of Fratton can all go to meet and do activities and events with a more integrated spirit (6)

More Sports Clubs for all ages with indoor facilities (4)

Update gym in community centre (3)

More Social Activities for children, more places for Family Entertainment (2)

Skate Parks(2)

Dance, Football (2)

Family Friendly Area (2)

More improved parks with exercise equipment (2)

Adult dance classes -60s/70s jive (2)

Theatre groups for adults and children (2)

Cinema (2)

Need Parks for Young Children,

Lack of recreational for 10 years plus

More for local people and teenagers

More Leisure Activities for recovering addicts

Funding for Mental Health i.e. Arts and Craft

Would like to see classes for older people in the community

Tea Coffee at the Rec - Toilet cleaner in the Rec

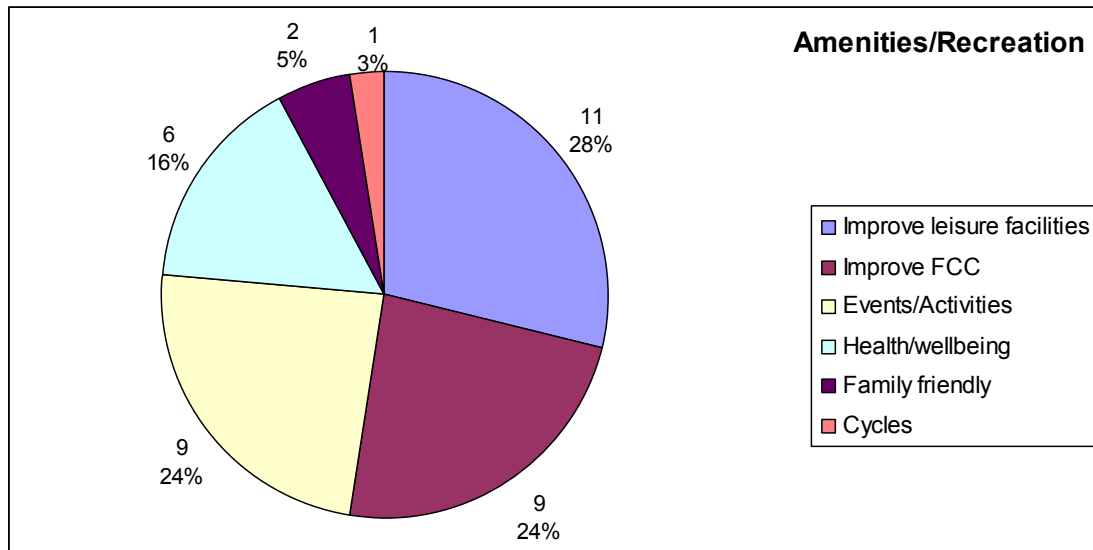
Graffiti Wall, Swimming Pool, Rugby

Green gyms

No Cycle ways

Drama,

Mini bus for the community centre



Community

More community & Higher profile police (10)

More community spirit (7)

Better communication about facilities

and what is going on in the area build on what is already there (4)

Doctor's surgery –or free transport to get to the doctors (4)

Community get together and more events (3)

More support and activities for the disabled and Mental Health (3)

Keep good traditions going with yearly festivities (2)

For drug addicts and alcoholics (2)

More local community based venues and centres (2)

Better Education

More classes for all ages

Information and advice centre

More needed for ethnic minorities

More support for people in homes

Better links between schools and community

No more flats

More public activities

Better social inclusion

Treatment centre?

Homeless shelter

Some where to go to meet other women

More provisions for parents

More places to socialise

More provisions for working parents

More social events that bring people together

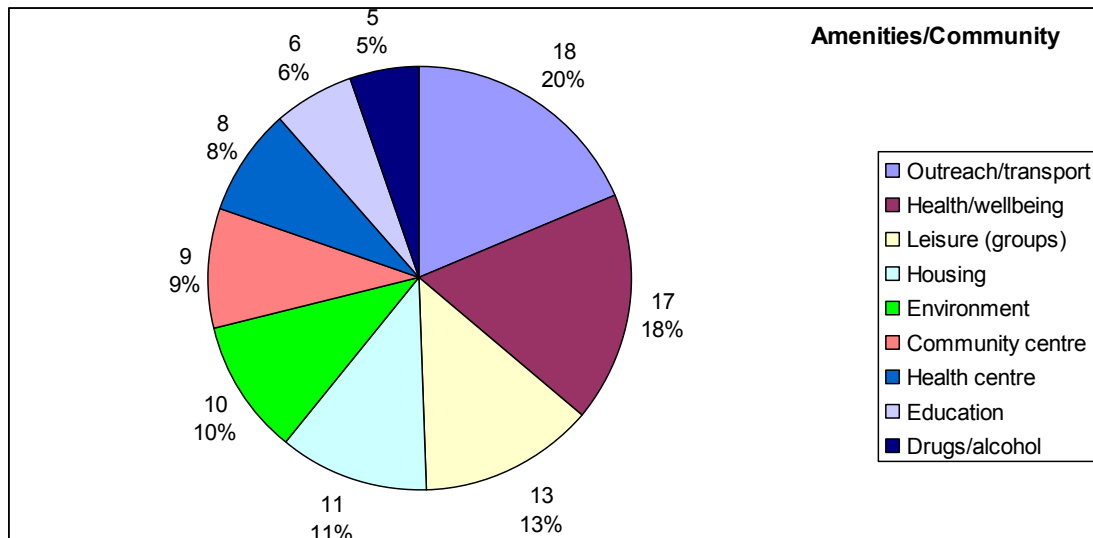
Music venues

Communal gardens

Pools / cinema / sport hall / ice rink / bowling alley / gym /



- Games room
- Cleaner area
- More support for people in homes
- Improve social housing
- Communal gardens
- More music events
- Yoga classes
- Cooking classes on a budget
- Music , art ,
- Day surgery – information centre
- Treatment centre
- Introduce pedestrian access
- One stop shop for fire, police, finance, information
- Community bus
- Dial a ride funding
- Day a week surgery in Fratton
- Funds for community group
- Community wardens
- Bank
- Rejuvenate Fratton rd encourage people back to the shops
- Seating areas in Fratton
- Safety, Drugs,



INFRASTRUCTURE

Environment

- Keep Fratton clean – clean streets – more bins etc (51)
- More open space, trees and parks (27)
- Street Furniture & flowers making for a better appearance –



paint shops more individual traders (22)

Crime, (18)

Too much dog poo (19)

Groups of youngsters outside shops and on street, gangs (15)

Too much traffic – congestion, pollution, re-routing (13)

Alcoholics and drug takers in public spaces (13)

Build communal gardens (6)

Cycling on the pavement (4)

Late night noise (4)

Tramps on the train station and on street (3)

Streets not safe (3)

The Rec in Fratton improved (3)

Busy late at night lots of people making it unsafe to go out (2)

Parking (2)

Better facilities around the church (2)

Improve cemetery pathways etc (2)

Anti social behaviour (2)

Pathways for mobility scooters

CCTV would help Fratton

Green areas would also help bring the community together where people could sit and children could play

MAKE IT a NO DOG ZONE

Park made suitable for all ages out side Manor Park school

Better living area

Better public transport NO 3

Lots of Improvements + Secure area for Mobility Scooters

Beginning to hate it

Street lights not adequate,

Friendlessness

Boat taken off Clive rd???

Less dogs

Fly Tippers needs addressing

A pedestrian precinct

Green space for Pond & Ducks

Improve transport for elderly and disabled

In need of foot bridge Clive Rd for Pushchair users

/ too many mobility scooters down Fratton rd

Fly tipping

Pollution

More for the elderly

Church garden needs more up keep

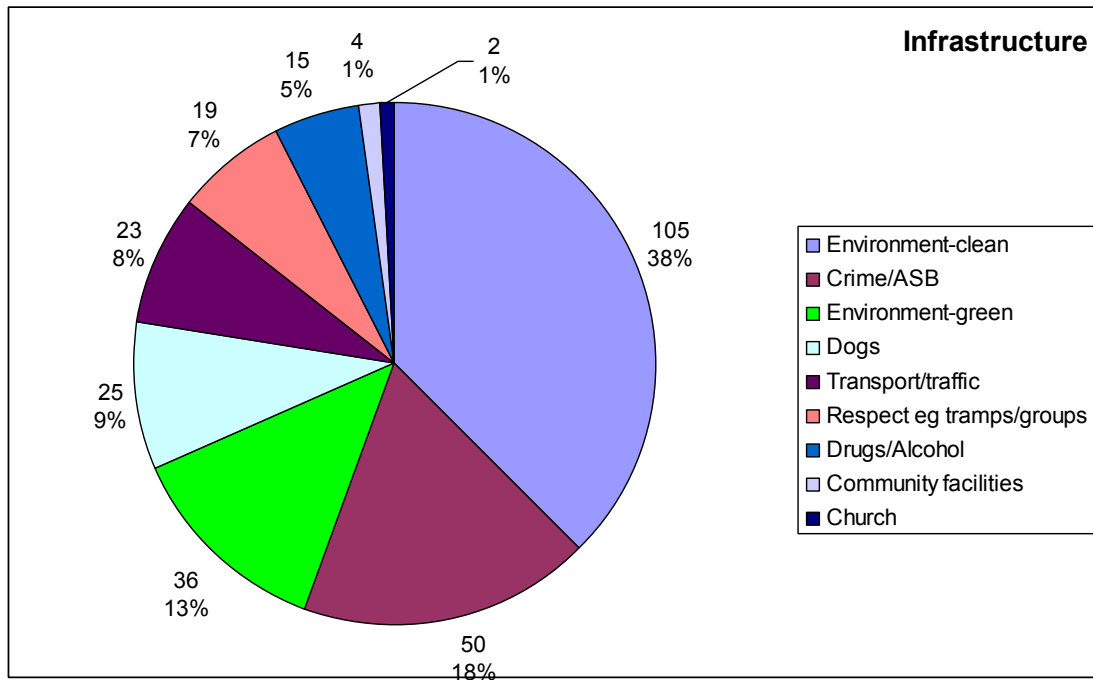
Improve play ground

New Rd needs dog bins

The smell



- Speeding
- Fights
- Violence
- Library is closing???
- Do something with abandoned buildings i.e. Regal palace
- Improve emergency service after 10 pm
- Address perceptions of feeling unsafe



YOUNG PEOPLE

Baby to toddler provision

- Place for young mums to meet with their young children (2)
- Parent Toddler work shop (2)
- More nursery provisions
- More play schemes
- Baby classes
- Splash pool
- Supervised play areas
- No safe places to go

Children

- play centres or areas (18)
- Children's Clean & Safe Areas, make the Rec safer (17) – *see specific list below*
- Parks and free local activities (10)
- Not enough for children's entertainment for all ages (9)
- More clubs (4)



More for the young like the ones offered by Sure Start (3)

More Sports (3)

A Youth Centre (2)

More Sport Activity for ages 10 to 14 children with problems

More for 9 to 15 years of age

More places for children to go

Up Grade leisure facilities at the community centre

Play schemes for children

Manor Park to be cleaned up

Play area north of new rd

Safe environment to go to disco

New sports centre

Adventure play ground

Some where for young diabetics to meet

Improve 'the Rec' includes :

- Automatic gates in the Rec play area
- More wardens
- Better lighting in the rec
- More seating in the rec
- A place to buy drinks in the rec
- Safer place for dogs in the rec
- Indoor children's play area

Young adults

Nothing to do (15)

More for young people – affordable or free (10)

youth clubs (9)

Need place for young adults to meet – centre etc (9)

Football clubs, leagues, tournament (7)

Swimming (5)

Fill the young adults nights and they may be less inclined to damage or intimidate people, integrate them into the community (4)

Family area (2)

ice rink (2)

Gym (2)

Cinema – reasonable prices (2)

A graffiti wall or alley (2)

More outdoor things for older children

Affordable classes for the young i.e. Boxing, belly dancing, cookery, Dance

More for young diabetics to meet

rugby club

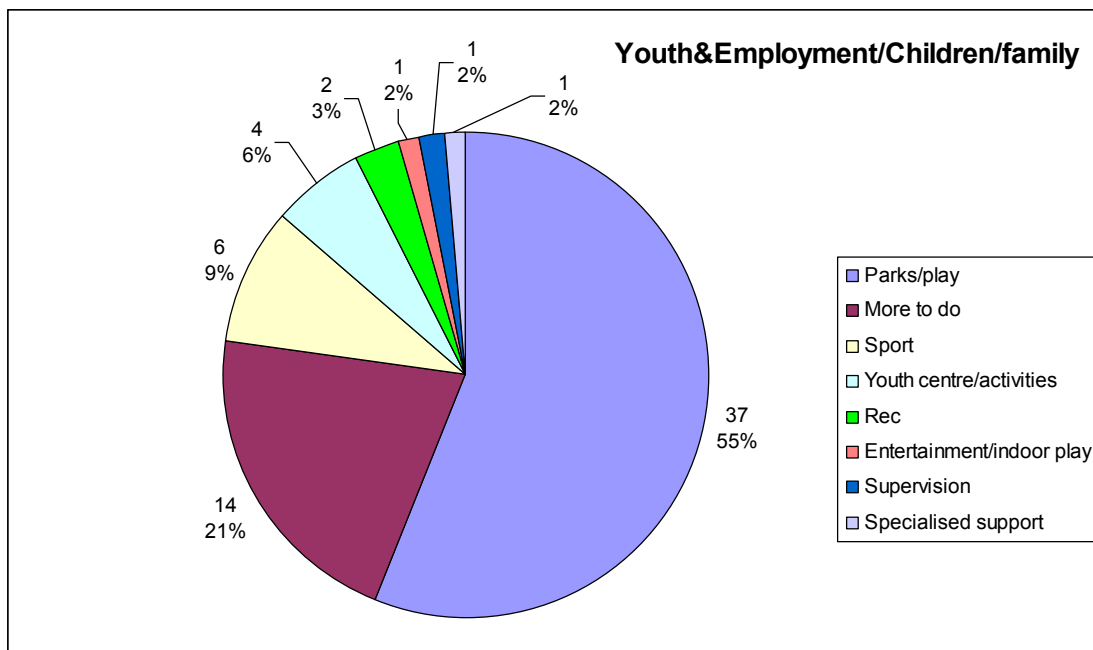
Every young person given the opportunity to be involved in sport



- Bowling
- Boxing,
- Need more activities (theatre) (workshops)
- Green gym
- Enterprise work shops and talks from business people
- Sewing lessons
- Skate Board Park
- Games room

Skills and employment

- More jobs for young people
- More job prospects for young people
- Improving jobs and education
- More employment for school leavers
- Adult literacy and numeracy classes
- Apprenticeships
- Increase prospect for youth employment



NOT FOR US BUT WE MAY BE ABLE TO HELP

- Parking issues (24)
- More public transport and make public transport more frequent and cheaper and especially improve No 3 service (15)
- Improved social housing and housing stock (11)



Improvement of Pavements and Roads (7)

Lollipop lady or man for new bridge school and elsewhere improve crossings (5)

More Police (4)

More cycle paths (3)

Unemployment (3)

A Disabled Access foot bridge over the train tracks from Clive rd (2)

Free cash machines (2)

Neighbours and ASB (2)

Animal cruelty (2)

Zoo (2)

Build pond with ducks (2)

Fly tipping (2)

More Bins

Less cars more pedestrian access

Schools?

More churches working together

Modern buildings

Air con for Fratton community centre

A cohesive multi raced society

Fratton park football saved

Arundel st round about needs moving?

More community centres

New pier?

New sports centre

More lighting along st Marys rd

Pompey football club

Rubbish and clutter

Parking for mob scooters

More nursery provisions

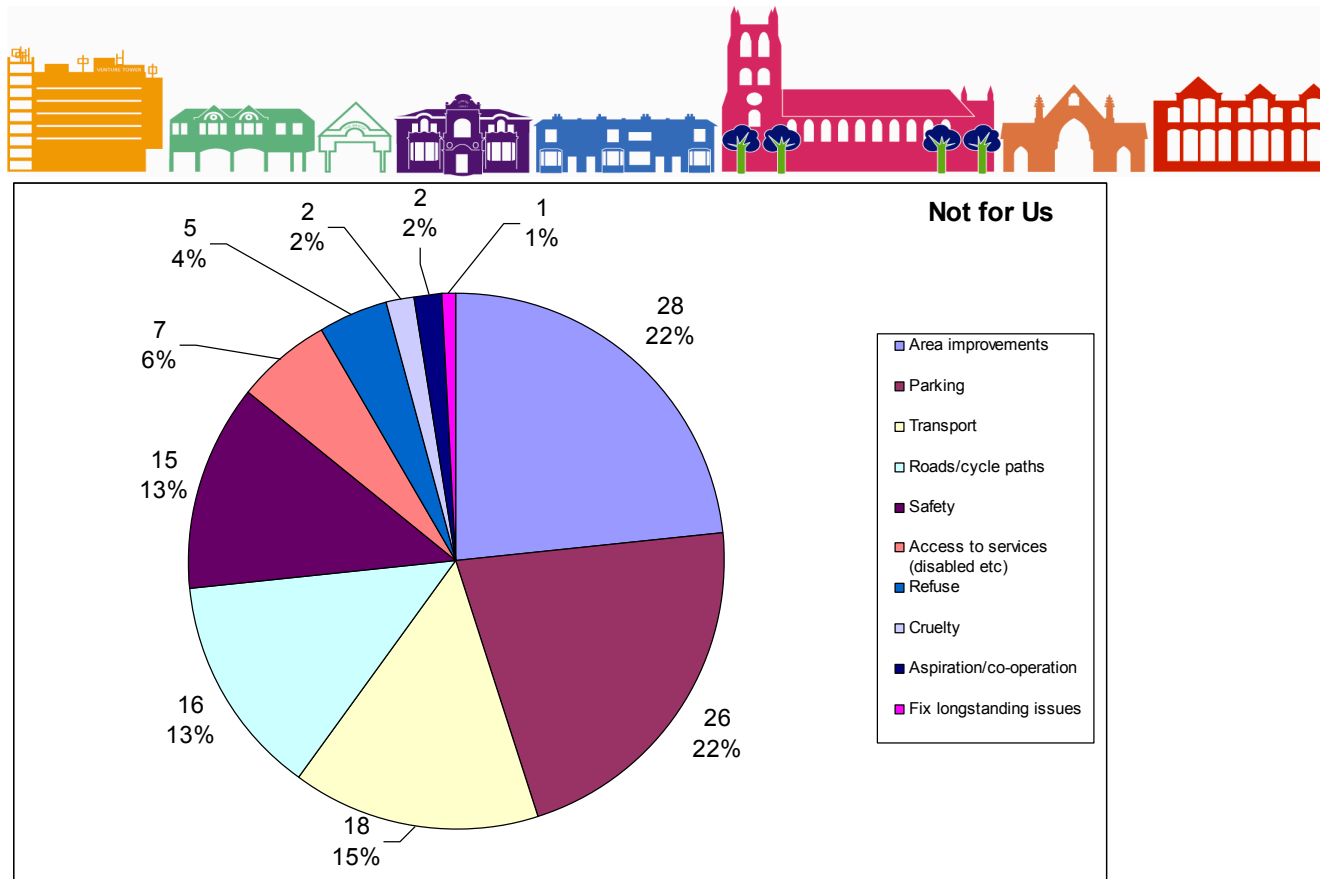
Rebuild Arundel st school ??

Getting rid of the boat in clive rd

Improve emergency services

Bank in the area

Healthy eating program



Appendix 3 - Emerging Collective Visions for Fratton

Main Themes - Information Identified through Community Visioning & Analysis of Data

Fratton will be a community where:

- ✓ People have been brought back together and community spirit has been recreated
- ✓ The appearance and “feel” of the area has been improved
- ✓ Activities for the community are thriving, particularly for the young
- ✓ The community helps each other to aspire and achieve more
- ✓ Under-achievement and illiteracy have been addressed



- ✓ The community has seen action working and believes in volunteering and active involvement
- ✓ Family financial resilience will have been increased e.g. ethical alternatives to “pay-day loans” implemented.

Appendix 4 - Fratton Facts

Demographics

- In 2012, an estimated 7.5% (n. 15,314) of Portsmouth’s population lived in Fratton ward, making it the seventh most populated ward in the city¹.
- The population of Fratton aged 16-64 (n. 11,700) is split almost equally between men and women.
- 21% (n. 3178) of the Fratton population are children (age 0 – 15); of these, 1195 are aged 0 – 4 and 1682 are aged 5 – 15. The 0 – 4 population is the second largest in the city (Charles Dickens is first), but the 5 – 15 population is only the seventh largest. Young people (16 – 24) account for 16.7% (n. 2567) of the Fratton population. Very surprisingly this has risen from 3.2% in 2001. The biggest increase is in the 20-24 age band. Strangely, the birth-rate is expected to fall between now and 2018.
- The working age population (age 16 – 64) make up 77.9% (n. 7,192) of the ward population (sixth largest in the city).
- 9% (n.1,385) of the ward population is aged 65+ (second smallest 65+ population in the city).

¹ Source: HCC 2011 based Small Area Population Forecast for 2012
<http://www3.hants.gov.uk/factsandfigures/population-statistics/pop-estimates/small-area-pop-stats.htm> + <http://www.nomisweb.co.uk/reports/lmp/ward/1308623818/report.aspx>



- In 2011, Fratton's live birth rate remained much the same at 20.8 per 1,000 resident population. Although the ward still has the highest live rate in the city (Portsmouth City average is 13.0 per 1000 residents), in common with the rest of Portsmouth the ward's live birth rate is forecast to fall over the next six years².
- Based on 2011 ACORN ward profiles, 86% of Fratton residents are categorised as of 'Moderate Means' ("Overall, the people in this category have modest lifestyles, but are able to get by.") More detailed information on ACORN categories is available from the ACORN User Guide: <http://www.caci.co.uk/acorn2009/CACI.htm>

Geography

- Fratton ward covers an area of 0.49 sq miles, making it the second smallest ward in Portsmouth³.
- Fratton is the second most densely populated ward in the city, with a population equivalent to 29,284 per sq mile (Central Southsea is the most densely populated ward, while Drayton & Farlington is the least densely populated).

Ethnicity & Religion

- Based on 2011 Census data, 86% of the population in Fratton is White, compared to a Portsmouth average of 95%.
- Asian/Asian British is the largest BME population in Fratton, (accounting for 7.0%, an increase from 2.7% in 2001). Also increased is the Mixed (up to 3.4% from 1.2%) and Black/Afro-Caribbean/Black British (up to 2.6% from 0.6%)
- The non-white British population has increased from 6% in 2001 to 14% in 2011.
- A growing Eastern European population (especially from Poland) is evidenced anecdotally by the growing number of Polish supermarkets across the city,

² Source: JSNA <http://www.portsmouth.gov.uk/living/19062.html>

³ Source: <http://www.portsmouth.gov.uk/yourcouncil/1488.html>



while School Census data⁴ shows that in Fratton, 14% of pupils (aged 5+) have a first language other than English, compared to a Portsmouth average of 11%.

- Based on 2011 Census data, Christianity is the single largest religion amongst the Fratton population but has declined to 50% compared with a figure of 65% in the 2001 census. This reflects the Portsmouth average of 50% (down from 68% in 2001). On a par with the city as a whole, 2.7% of the Fratton population is Muslim.
- 45% of the Fratton population either don't have or didn't state a religion in 2011 (compared with 31% in 2001) (This compares with a Portsmouth average of 24%.)

Local government/democracy

As at 3rd January 2012, Fratton's electorate (adults registered to vote) numbered 10,971 (an estimated 99.4% of the population, compared to a Portsmouth average of 94%), making Fratton the ward with the second highest proportion of its adult residents registered to vote

Housing

In 2011 there were an estimated 6,711 dwellings in Fratton ward – of these, 4.6% (n. 310) are local authority housing, an estimated 1.4% (n. 95) are classed as social and other rented and the remainder (94%, n. 6,306) are owner occupied or private rented.

- Based on the 2001 Census, 40% of older people (aged 65+) live in households without central heating.

Deprivation

- Based on 2009 Paycheck data, the estimated average gross (before tax) household income in Fratton is £31,000 p.a. or £596.15 p.w. The Portsmouth average is £32,900 (ranging from £22,400 in Charles Dickens to £41,100 in Drayton & Farlington).

⁴ January 2011 School Census data from JSNA (accessed 26 April 2012)



- According to the Joseph Rowntree Foundation⁵ in 2009/10 the low-income threshold (60% of national median income, net of taxes including Council Tax and before housing costs) for a couple with two children under 14 was £347 p.w.
- If a couple in Fratton are jointly earning £31,000 and assuming that the only benefit they receive is child benefit for two children, (a total of £33.70 p.w.) and they're paying income tax and National Insurance at the standard rate and Band B Council Tax, they will have a weekly household income of £516.18 (net of taxes, before housing costs), which equates to 89% of national median income.
- Household income will vary depending on a number of factors, but this worked example emphasizes that while an 'average' Fratton family may be living above the poverty line, they have limited resilience to a sudden change in circumstances such as job loss or ill health.
- Based on data from the Indices of Multiple Deprivation 2010 (IMD 2010), 29% of children in Fratton are living in income deprivation⁶, compared to a Portsmouth average of 25%. Child poverty is highest in Charles Dickens ward (52%) and lowest in Drayton & Farlington (5%).
- Based on IMD 2010, 20% of older people (aged 60+) in Fratton are living in income deprivation⁷, compared to a Portsmouth average of 18%. Poverty affecting older people is highest in Charles Dickens ward (38%) and lowest in Drayton & Farlington (6%).

Employment

Note: Information on this section is based on 2001 Census results, which are the most comprehensive labour market information available at ward level until the 2011 Census results are released over the next few months.

⁵ <http://www.jrf.org.uk/sites/files/jrf/poverty-social-exclusion-assessment-full.pdf>

⁶ Defined as either families receiving Income Support or income-based Jobseeker's Allowance or Pension Credit (Guarantee) or those not in receipt of these benefits but in receipt of Child Tax Credit with an equivalised income (excluding housing benefits) below 60% of the national median before housing costs.

⁷ This domain measures the proportion of the population aged 60 years and over with low incomes, and combines two indicators: in receipt of income support, and income-based job seekers allowance.



- Based on 2001 Census results, 78% of the working age population in Fratton ward is economically active (defined as working or looking for work in the week before Census), compared to a Portsmouth average of 75%.
- Of the economically active population, 74% are in employment (Portsmouth 71%) and 5% are unemployed.
- In terms of gender split, 85% of working age men are economically active (Portsmouth 80%) compared to 71% of women (Portsmouth 69%). 5.4% of economically active men are unemployed compared to 4.5% of women.
- In terms of hours worked, 93% of economically active men in employment work full time (Portsmouth 90%) compared to 62% of women (Portsmouth 58%).
- Looking at occupations, fewer people in Fratton ward are employed as Managers and senior officials; Professional; and Associate professional & technical than the Portsmouth average. Conversely, the ward has more people working in Administrative & secretarial; Skilled trades; Personal services; Sales and customer services; Process plant and machine operatives; and Elementary occupations. However, it's worth noting that the only significant difference between Fratton and Portsmouth is amongst the Professional category⁸, which account for 6.8% of the employed economically active population compared to 10.2% across Portsmouth as a whole.
- 52% of the Fratton population (aged 16 – 74) have lower level qualifications (e.g. GCSE, O levels, A levels, NVQ levels 1 – 3) compared to 48% of the Portsmouth population as a whole. At 35% Fratton is on a par with the whole Portsmouth population in terms of adults (aged 16 – 74) with no qualifications (or level unknown). When it comes to higher level qualifications (e.g. first degrees, higher degrees, NVQ levels 4 and 5, HND, HNC and certain professional qualifications), only 13% of Fratton's population is qualified to this level compared to 18% across Portsmouth as a whole.

Unemployment

- As at March 2012, 4.6% of Fratton's working age population (n. 537) were claiming Jobseeker's Allowance (JSA), compared to a Portsmouth average of 3.8%. Unemployment is higher amongst men than women – 6.3% of the

⁸ 2000 edition of the Standard Occupational Classification (SOC)



male population is claiming JSA (compared to 5.2% of Portsmouth's male population), while only 2.9% of women are (2.4% for the city as a whole)⁹.

- As at March 2012, 26% of the JSA claimants in Fratton ward were aged 18 – 24 (Portsmouth 27%); 60% were aged 25 – 49 (Portsmouth 56%); and 14% were aged 50+ (Portsmouth 16%).
- In terms of duration, as at March 2012, 61% of claimants had been claiming for up to six months (Portsmouth 60%); 20% had been claiming for between six and 12 months (Portsmouth 21%); and 20% had been claiming for over a year (Portsmouth 19%).
- As at August 2011, 14.4% of the working age population (16 – 64) is claiming Department of Work and Pensions (DWP) benefits, compared to a Portsmouth average of 13.3%¹⁰.

Transport

- Based on 2011 Census results, 33% of households in Fratton ward did not have access to a car or van compared to 31% across the city.
- Resident population travel to work data 10% use public transport, compared to 13% of Portsmouth commuters. Six percent of Fratton people walk or ride a bicycle compared to 24% in Portsmouth and 24% travel to work by car, van or motorbike.

Education

- Revised figures for 2011 show that 69.9 per cent of Portsmouth pupils at the end of Key Stage 4 achieved 5 or more GCSE and equivalents at grades A*-C up from 46% per cent in 2005. Revised figures for 2011 show that 90.5 per cent of pupils at the end of Key Stage 4 achieved 5 or more GCSE and equivalents at grades A*-G up from 82.7 per cent in 2005. *In*

⁹ Source: NOMIS <http://www.nomisweb.co.uk/reports/lmp/ward/1308623818/report.aspx> (Accessed 8 May 2012)

¹⁰ http://www.saferportsmouth.org.uk/files/7513/5409/6973/Strategic_Assessment_2011-12_Final_version.pdf



Fratton, 2011 55.6% of pupils achieved a grade A to C in GCSE and 93.4% gained A-G grades.*

Crime and Anti-Social Behaviour

- Rowdy and inconsiderate behaviour was by far the largest category of ASB reported in Fratton in 2011/12, accounting for 40% of reports (n175). A recent report by police found that 32% of ASB in Portsmouth was youth related, and that top roads included London Road and Kingston Road.
- The top three types of offences reported in Fratton in 2011/12 were: criminal damage (23%, n134 - this is used as a performance indicator to monitor ASB by the SPP), other theft (16%, n93 – which includes cycle theft) and common assault (11%, n65).
- Fratton CTCG have identified that public drinking in St Mary's church yard is a problem area in warmer weather, although this was successfully tackled through multi agency working and community engagement. There has also been an emergence of a group of young people in the Buckland area, who are migrating over to the Kingston area causing ASB: rowdy and inconsiderate behaviour, trespass and criminal damage.

Health

- The JSNA provides a crude rate per 1,000 of the working age population claiming Carers' Allowance. As at February 2011, the rate in Fratton was 9.4 per 1,000 compared to 10.4 for the city as a whole.
- The JSNA also provides a crude rate per 1,000 of the 18+ population receiving services in the community from Adult Social Care for mental health problems. In 2010/11, the rate in Fratton was 3.7 per 1,000.
- The JSNA also provides a crude rate per 1,000 of the 18+ population with physical disabilities receiving services in the community from Adult Social Care. In 2010/11, the rate in Fratton was 19.6 per 1,000.
- Further data on health in Fratton can be found in the draft ward public health profile created by the JSNA team:



Fratton Ward Public Health Profile Draft.

Appendix 5

Control and click on the map below to see the full digital version online.



Appendix 6

A summary of the list of places and groups consulted or where visioning took place.

2 nd May 2011	May Fayre at St. Mary's Church
--------------------------	--------------------------------



3 rd June 2011	Community stand at The Bridge Centre
30 th July 2011	Lake Road Health Centre Open Day
14 th November 2011	Fratton Live at Home
2 nd December 2011	Newbridge School Parents' evening
6 th December 2011	Jo's group – ladies' gym group
7 th December 2011	Fratton Live at Home
January 2012	Reference group
23 rd February 2012	Binstead Community Centre
28 th March 2012	City Girls' School Parents evening
7 th May 2012	May Fayre at St. Mary's Church
14 th May 2012	City Girls' School Parents' evening
21 st May 2012	City Girls' School Parents' evening
30 th June 2012	Community Fun day, City Girls' School
9 th July 2012	Parents' evening, Manor Infants School
10 th July 2012	Public Meeting, Fratton Neighbourhood Forum
15 th July 2012	Strawberry Tea, St Mary's Church
16 th July 2012	Olympic Torch teas and coffees, St Mary's Church
16 th July 2012	Newbridge Parents' evening
18 th September 2012	My Voice, youth project, Carnegie Library
October + November 2012	Pop up events The Bridge Centre, St Marys Church, and Fratton Community Centre

Appendix 7

<http://www.youtube.com/watch?v=0kyTv2o2MDU> *upload to website to see all

<http://frattonbiglocal.org.uk/a-day-in-the-life-of-fratton/>